

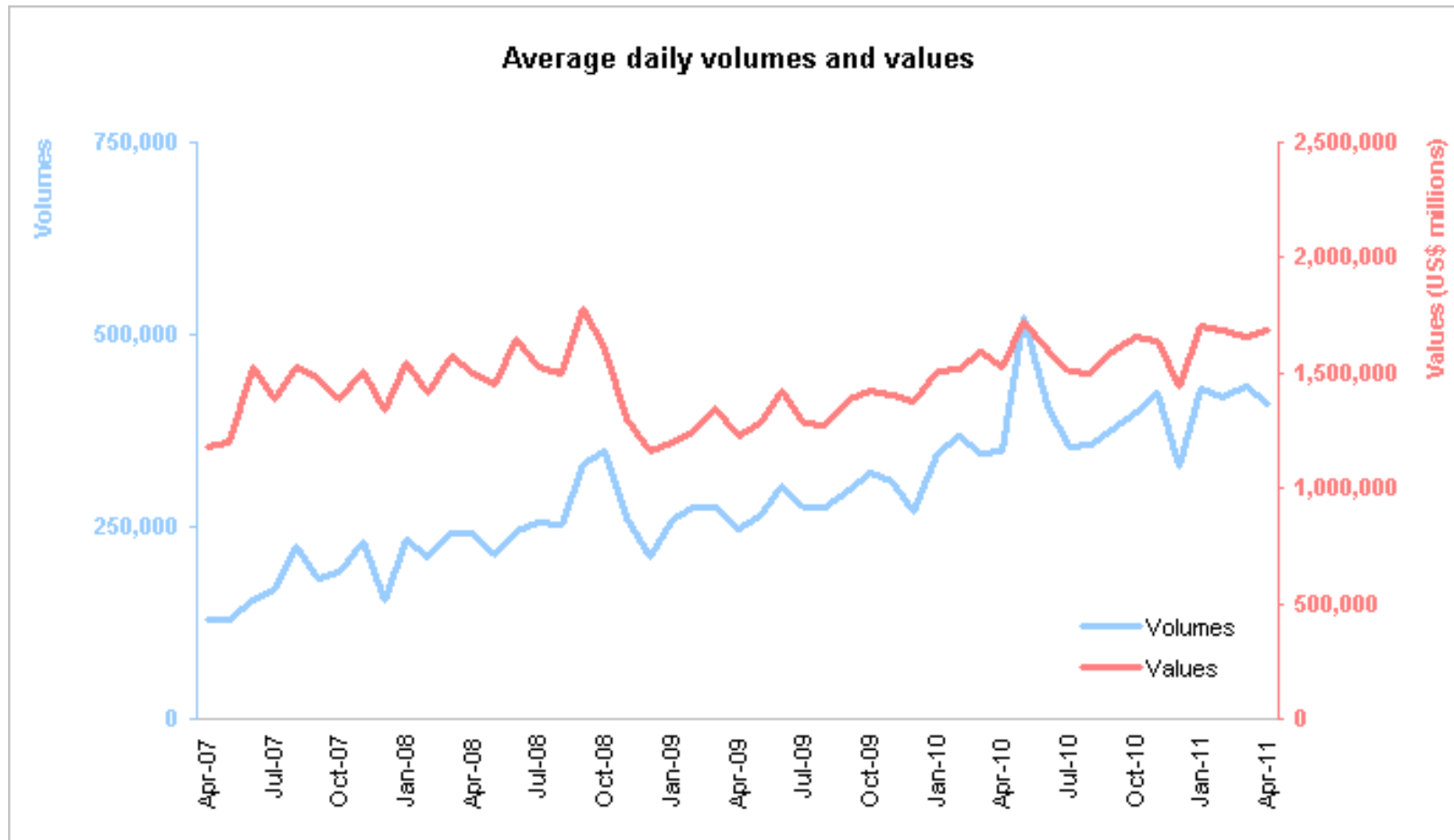


CLS Monthly Market Report April 2011

www.cls-group.com



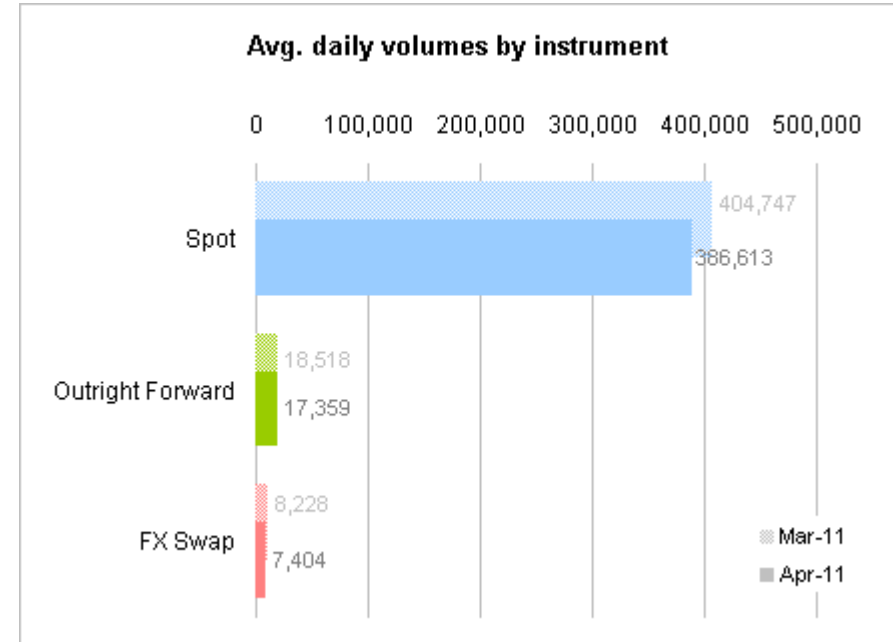
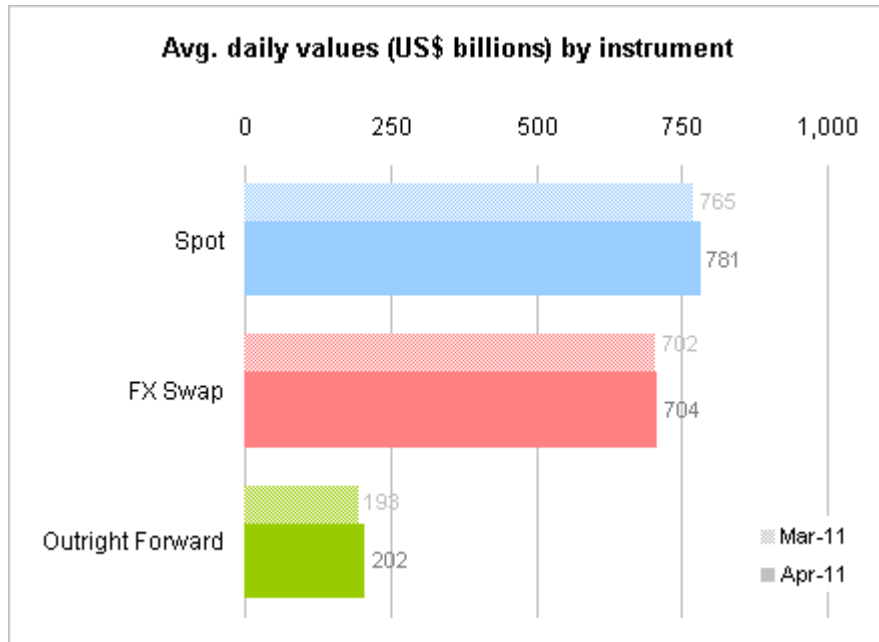
CLS Volumes and Values



These values are the total value of trades submitted to CLS on trade date.

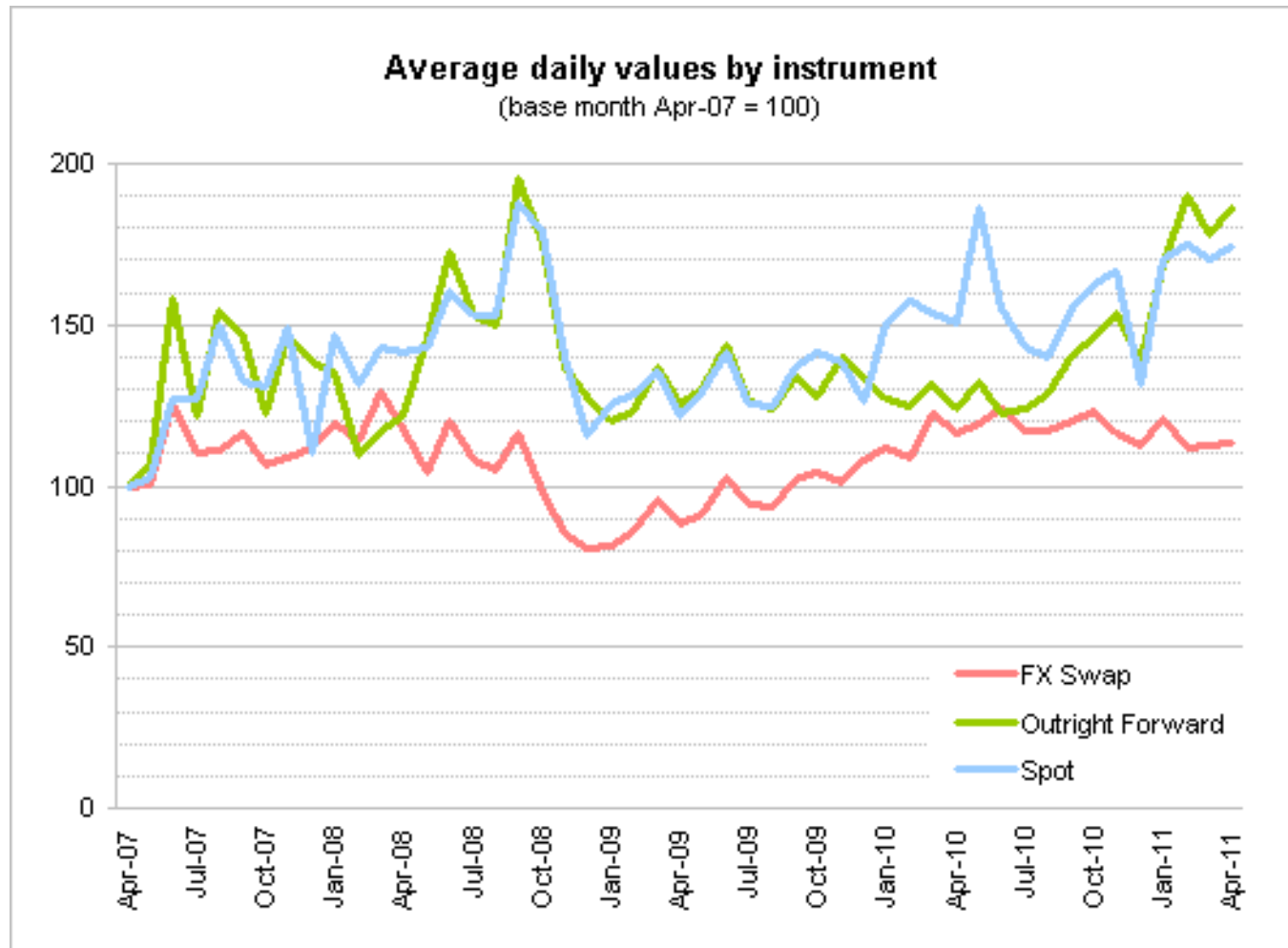


Value and volume by instrument month on month



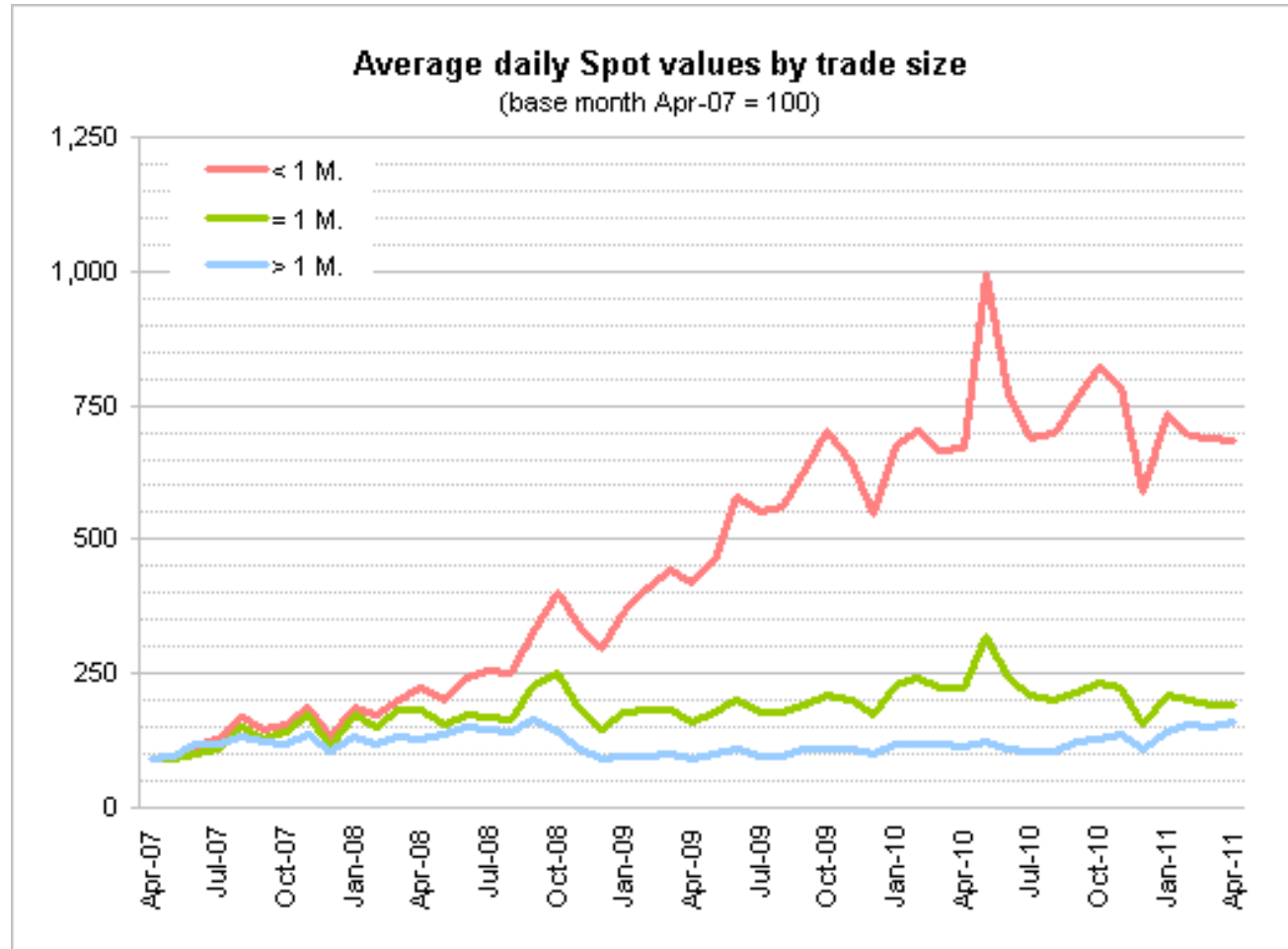
These values are the total value of trades submitted to CLS on trade date. (N.B. I/O Swaps are excluded from these figures)

CLS index on trade value by instrument



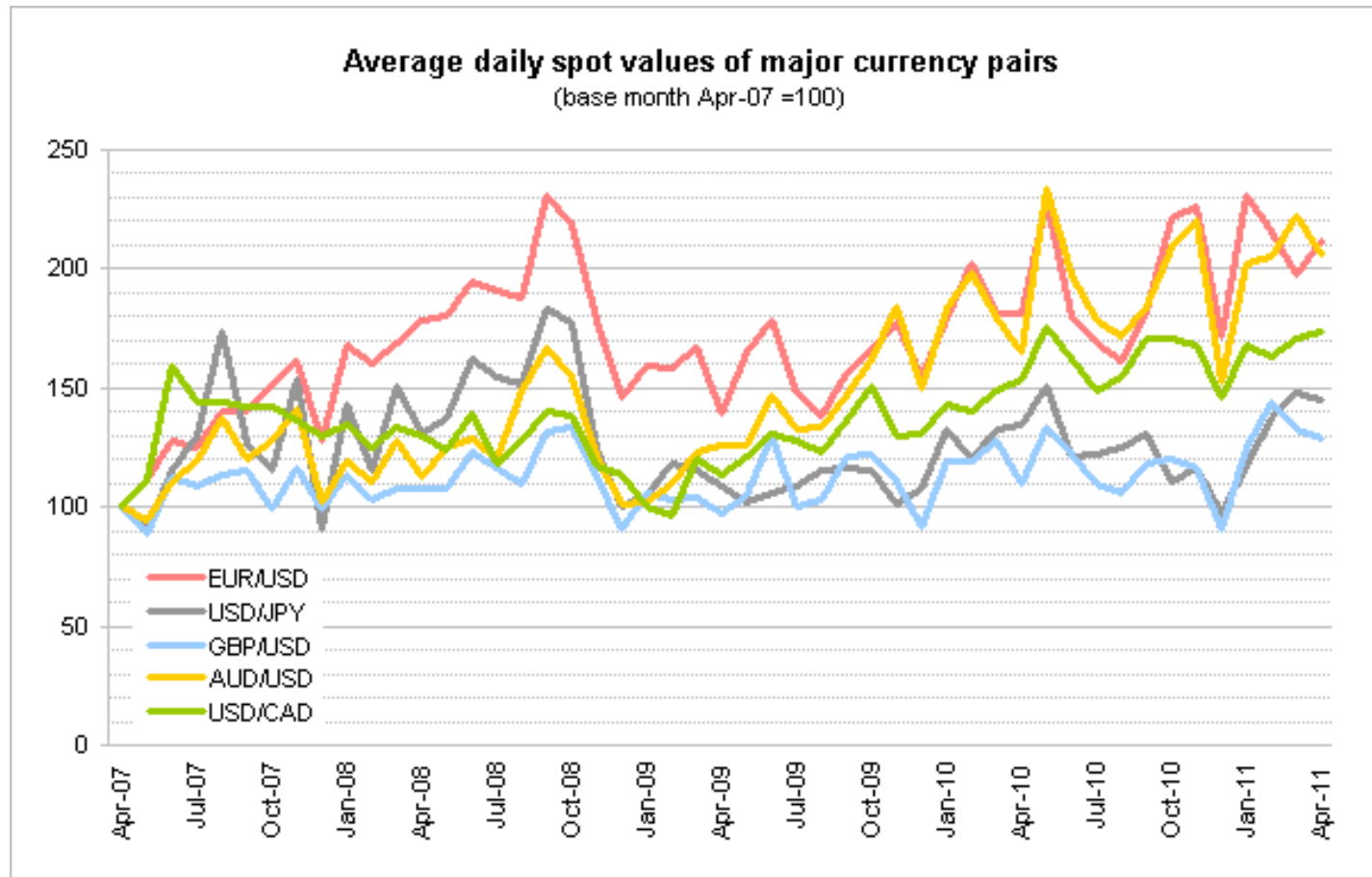
Value (US\$) of trades by instrument submitted to CLS by traded month relative to Apr-07

CLS index on trade value by size



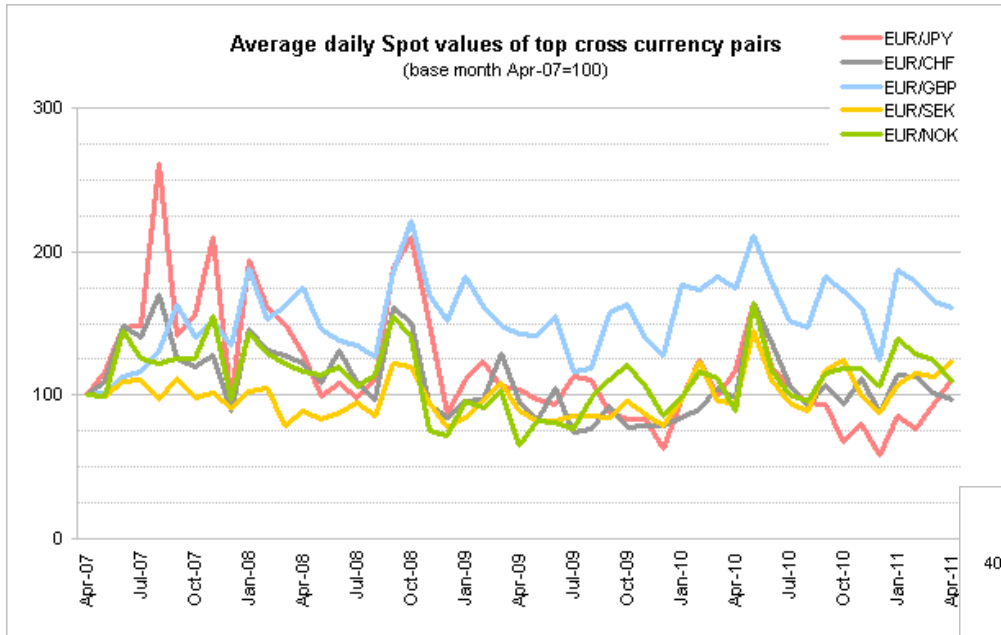
Value (US\$) of trades by size (in base currency) submitted to CLS by traded month relative to Apr-07

CLS index of top 5 currency pairs

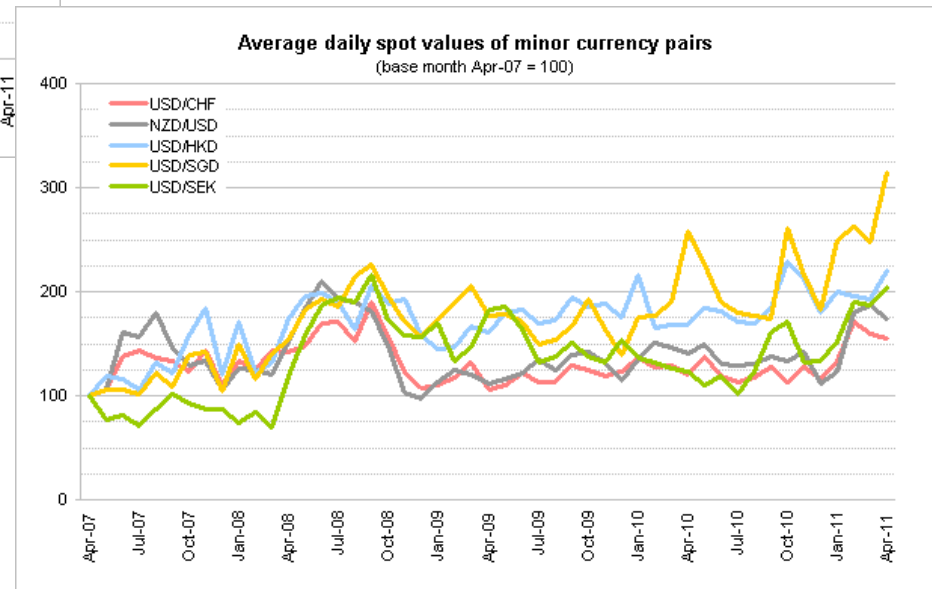


Value of spot trades in base currency by currency pair submitted to CLS by traded month relative to Apr-07

CLS indexes on other currency pairs



Value (US\$) of trades submitted to CLS by traded month relative to Apr-07



Value (US\$) of trades submitted to CLS by traded month relative to Apr-07

