

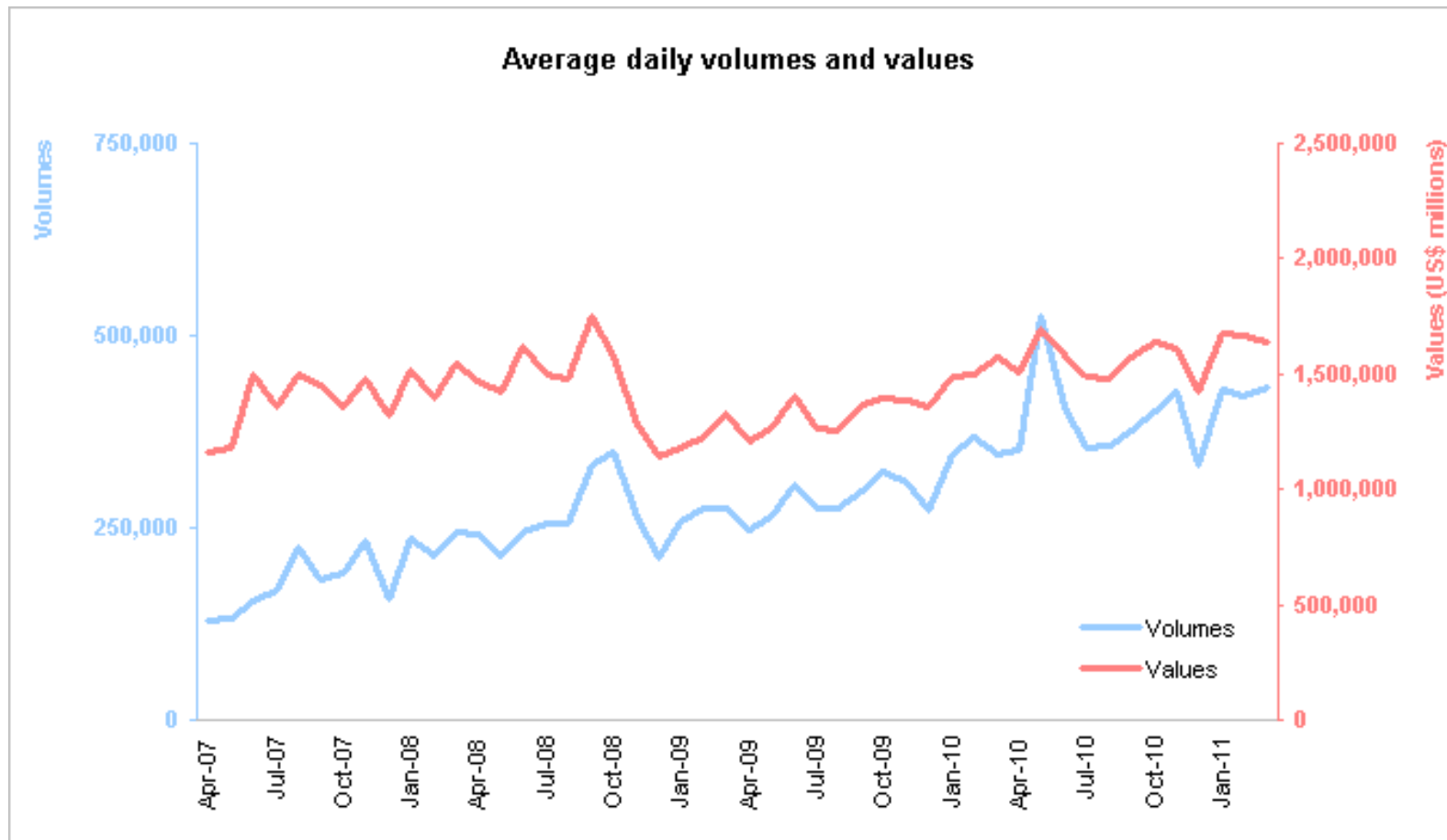


# CLS Monthly Market Report March 2011

[www.cls-group.com](http://www.cls-group.com)



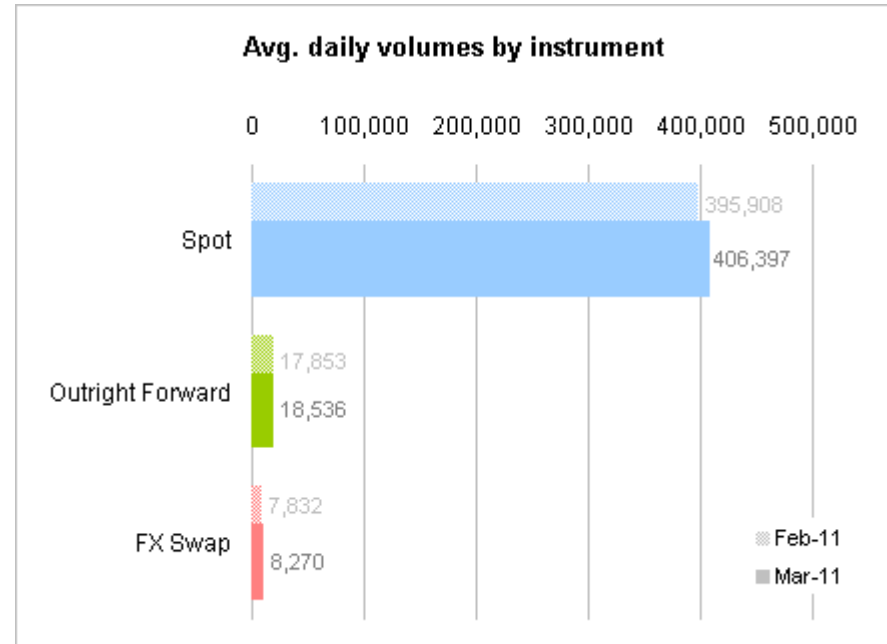
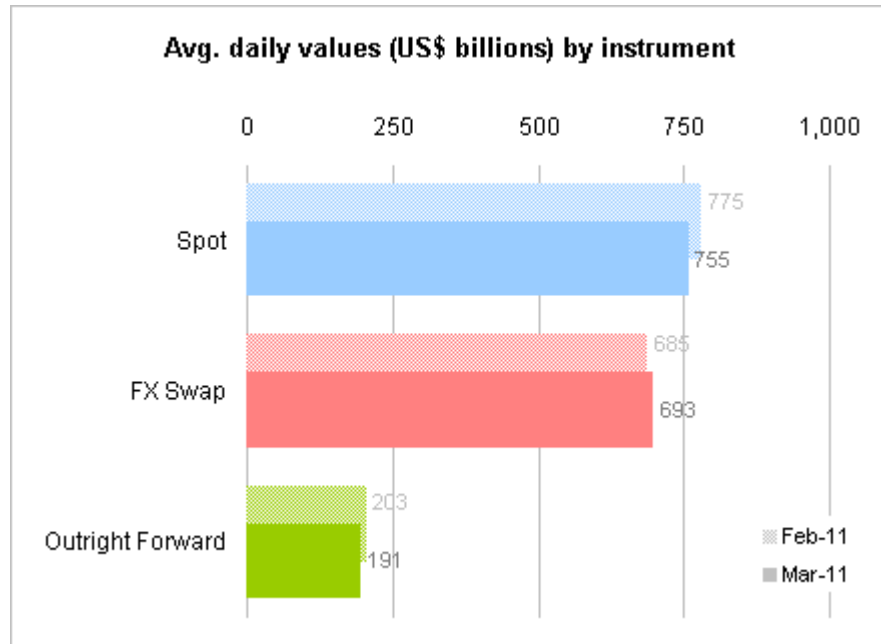
# CLS Volumes and Values



These values are the total value of trades submitted to CLS on trade date.

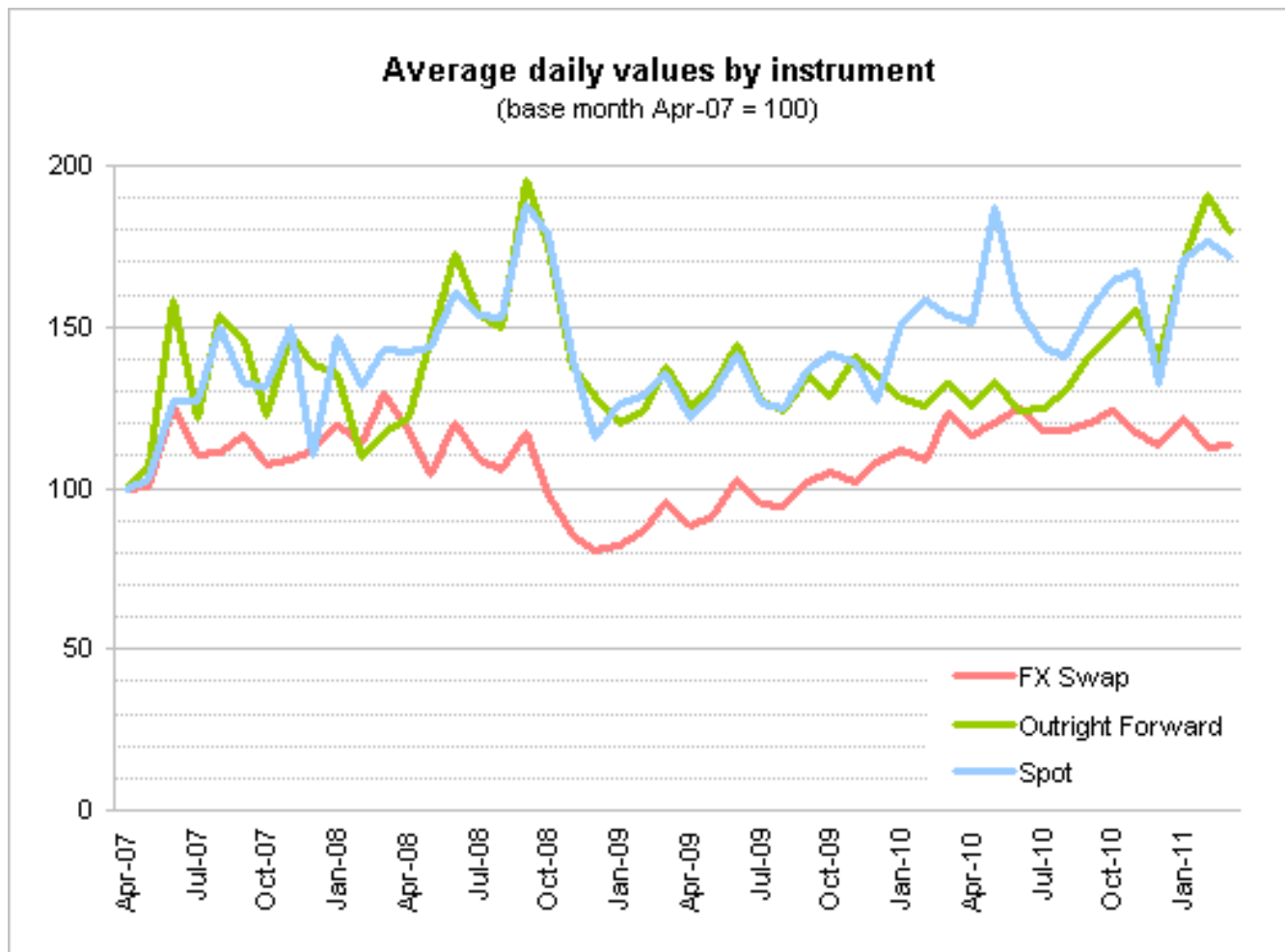


# Value and volume by instrument month on month



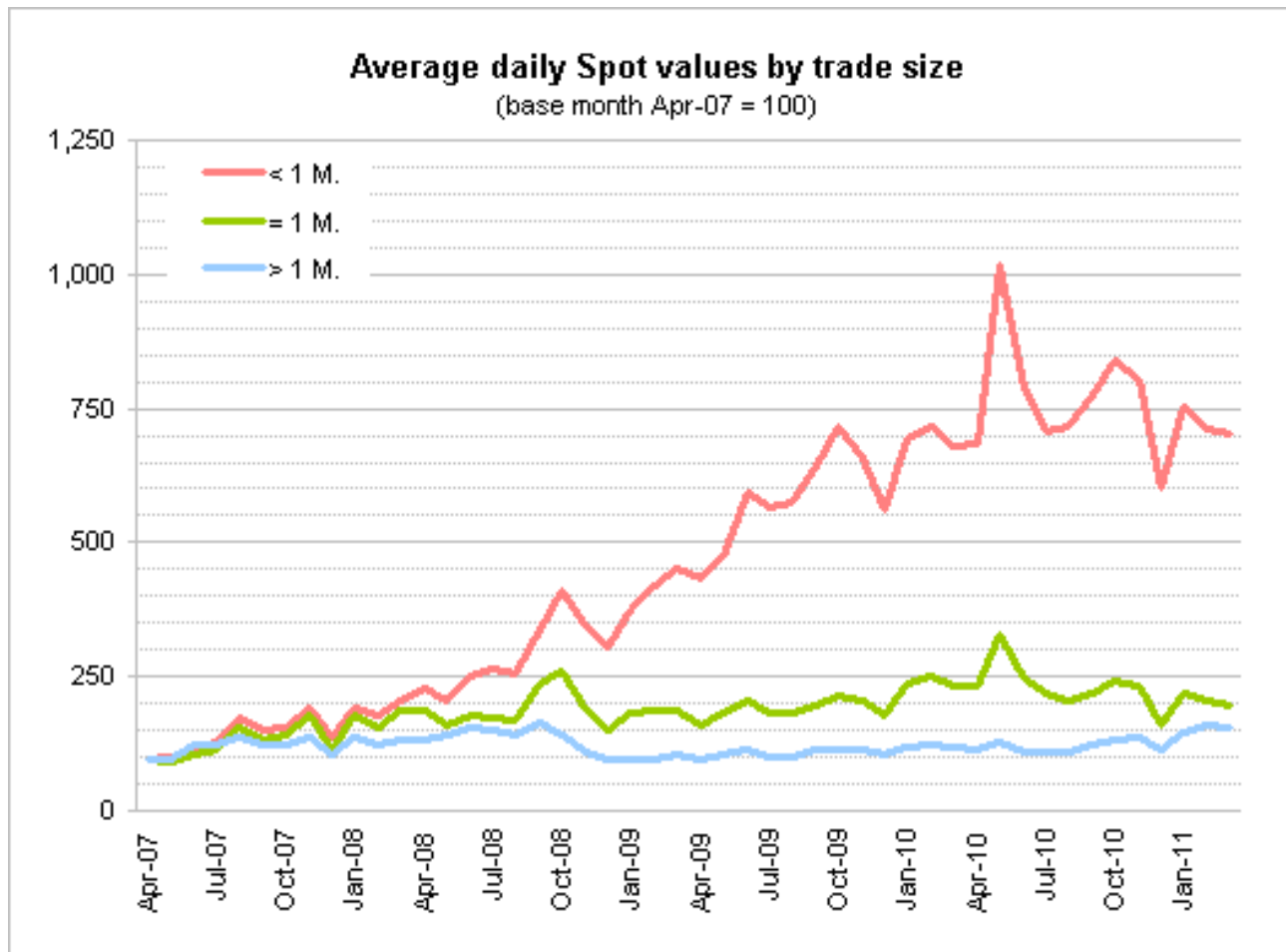
These values are the total value of trades submitted to CLS on trade date. (N.B. I/O Swaps are excluded from these figures)

# CLS index on trade value by instrument



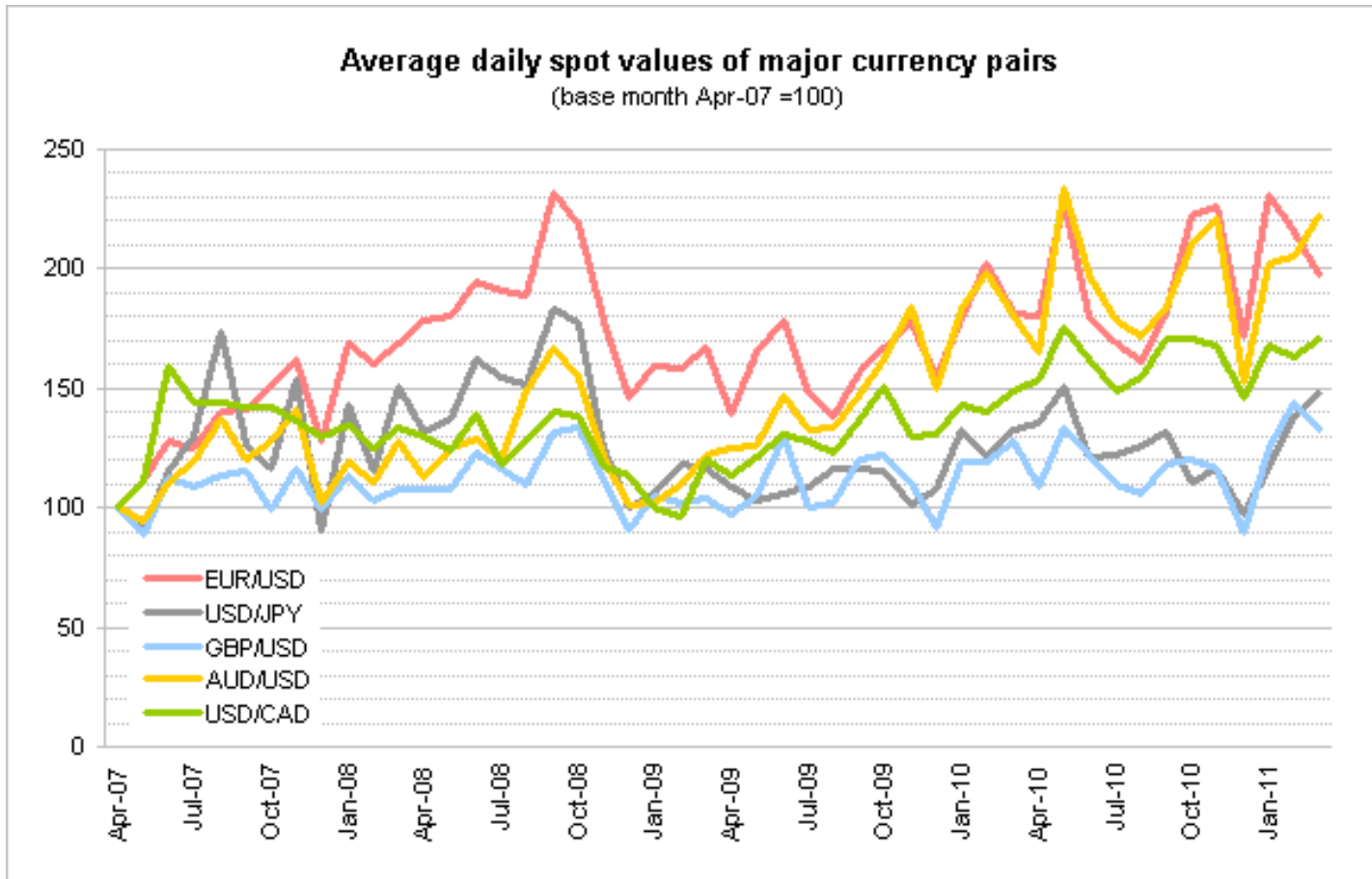
Value (US\$) of trades by instrument submitted to CLS by traded month relative to Apr-07

# CLS index on trade value by size



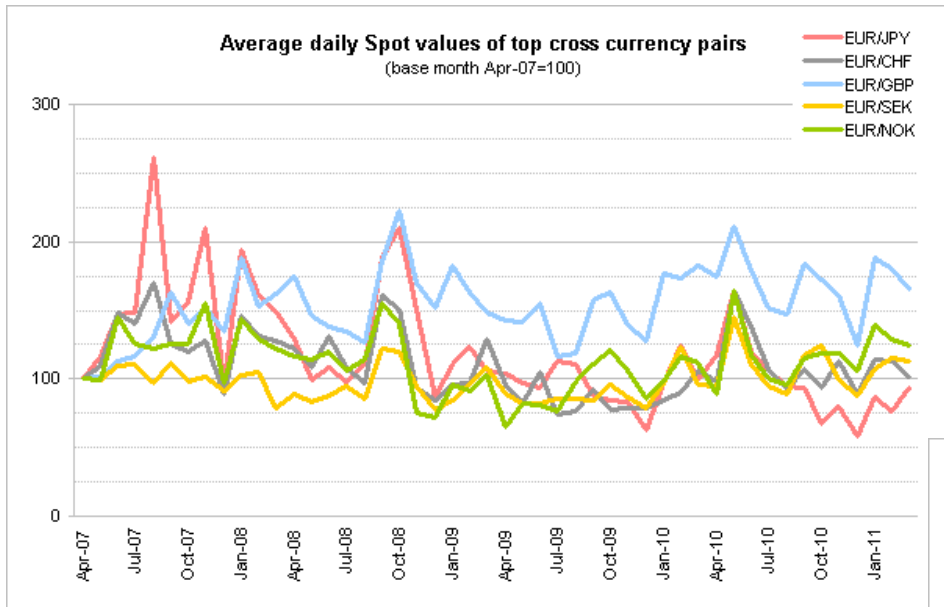
Value (US\$) of trades by size (in base currency) submitted to CLS by traded month relative to Apr-07

# CLS index of top 5 currency pairs

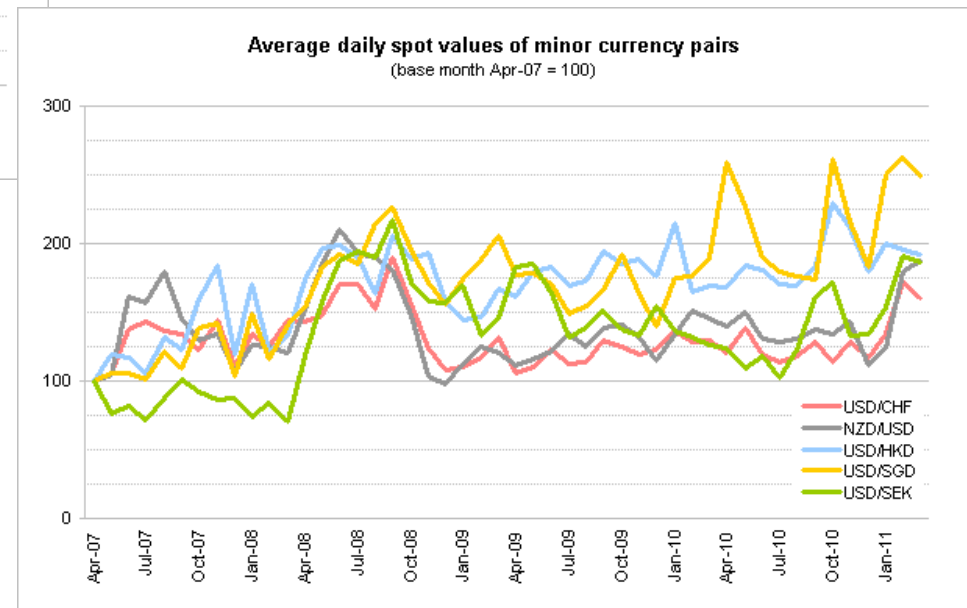


Value of spot trades in base currency by currency pair submitted to CLS by traded month relative to Apr-07

# CLS indexes on other currency pairs



Value (US\$) of trades submitted to CLS by traded month relative to Apr-07



Value (US\$) of trades submitted to CLS by traded month relative to Apr-07

